

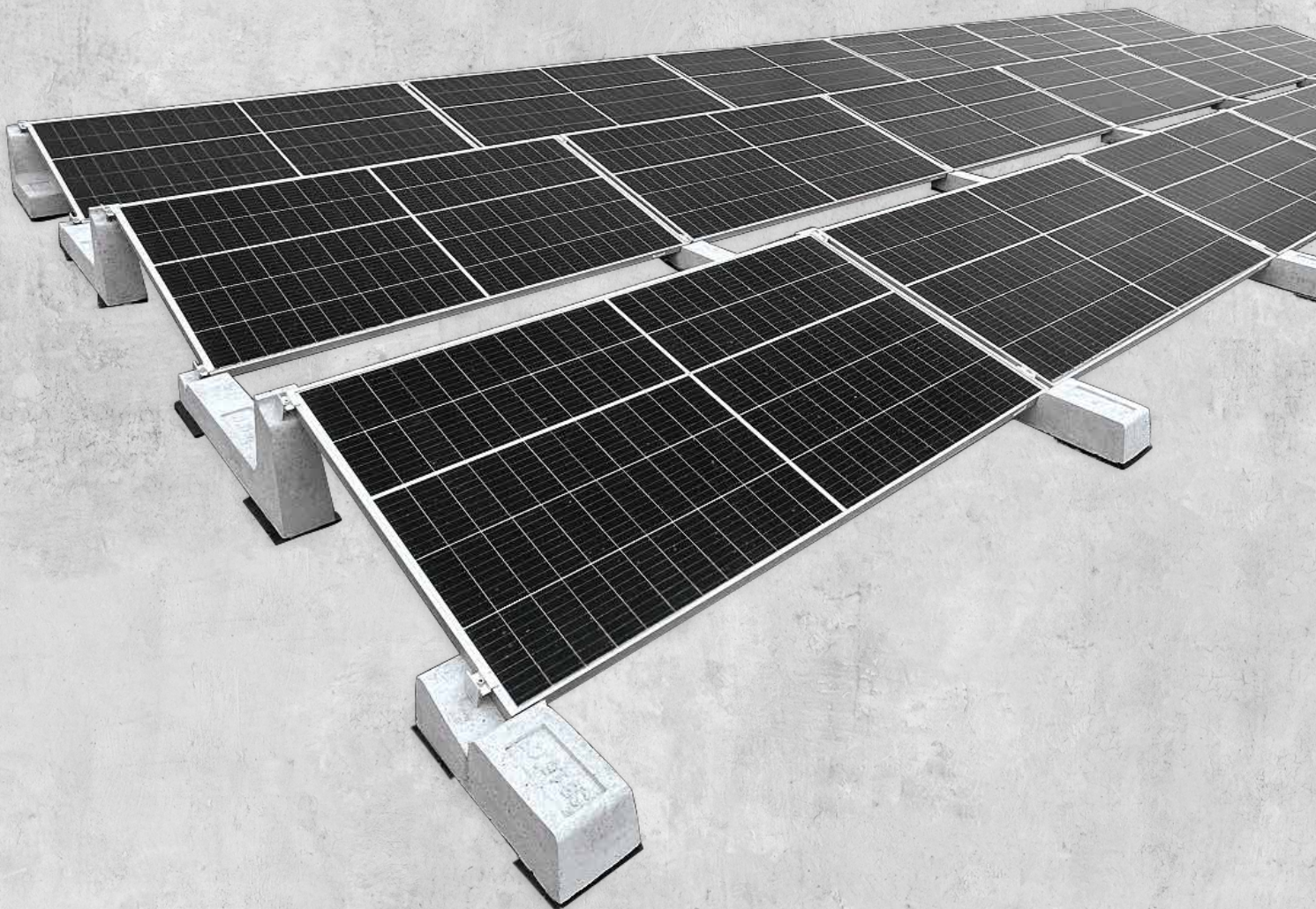
# SUN BALLAST

Made to last

Patented systems

## THE IDEAL MOUNTING SYSTEM

FOR PHOTOVOLTAIC PANELS  
ON FLAT ROOFS





# MAD E T





# TO LAST









# SUN BALLAST® IS SOLID-STATE SIMPLICITY



SINCE 2012 WE'VE BEEN LOOKING AT THE WORLD  
WITH A DESIRE TO IMPROVE IT,  
BY PROVIDING STRAIGHTFORWARD,  
LONGLASTING SOLUTIONS TO ANYONE WHO'S MADE  
THE ENERGY OF THE FUTURE THEIR BUSINESS.

Sun Ballast® was established by its CEO, **Maurizio Iannuzzi**, who has extensive experience in the installation of photovoltaic plants, and has been developing mounting systems for flat roofs for more than ten years to make installation operations easier and quicker.

This is our way of contributing to change, and giving safe, solid,  
tangible support to the energy of the future.

Support that is made to last.

As a Benefit Corporation involved in dozens of social projects, Sun Ballast® sets the global standard in the field of solar mounting structures for flat roofs, and the company's innovative concrete ballasts support thousands of photovoltaic systems throughout the world.



# THE IDEAL MOUNTING SYSTEM FOR FLAT ROOFS



OUR CONCRETE BALLASTS  
HAVE REVOLUTIONISED  
THE INDUSTRY OF SOLAR MOUNTING SYSTEMS,  
AND SET THE STANDARD  
FOR ALL PV SYSTEMS INSTALLED ON FLAT ROOFS.

Safe, solid and versatile Sun Ballast®  
systems combine support and ballast functions into one unique feature.  
This simplicity underpins the global success of solutions from Sun Ballast®.

Our ballasts are made with premium materials and do not require any drilling  
to affix them to roofs. Simply position them, secure the panel to the embedded fasteners  
and installation is complete.

Developed from Sun Ballast's passion for research and development of innovative real-world  
solutions, our systems are available in a wide range of tilt angles and make the installation of  
PV systems on flat roofs extremely quick, easy and safe.









# MADDE TO FAST





# LONG LASTING SOLUTIONS



ALL BALLASTS PRODUCED BY SUN BALLAST®  
ARE MADE OF HIGH-STRENGTH CONCRETE,  
AND CONTAIN FASTENERS  
AND A SPECIAL METAL CORE.  
BECAUSE STRENGTH ISN'T OPTIONAL

Premium quality  
raw materials and processes. Ballasts produced by Sun Ballast®  
are made of C32/40 concrete and are resistant to any type of cracking or corrosion.

The metal core within the structure  
provides extra resistance to mechanical strain,  
and the M8 threaded inserts enable panels to be secured even faster.

Sun Ballast® systems are tested in a wind tunnel and climatic chamber,  
and ensure a perfect balance between sturdiness, roof load and wind resistance.  
Guaranteed for 25 years but far longer-lasting.





RESISTING





# THE WIND

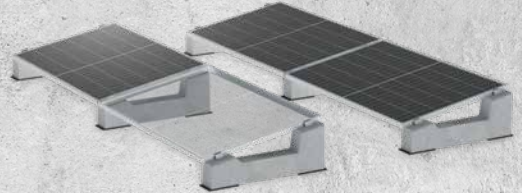


# SUN BALLAST<sup>®</sup> SYSTEMS

1

## Single-Row

Page 13

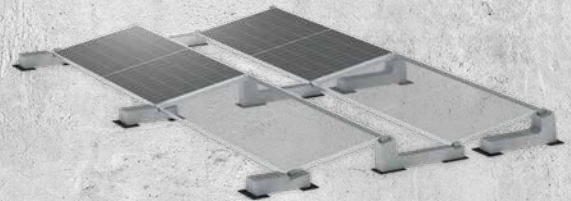


**Simple, fast and versatile:** the Single-Row system is available in a wide range of models, and allows modules to be positioned vertically, horizontally or with East-West orientation by freely modulating the distance between rows.

2

## Connect

Page 14



**Low load, high strength:** the Connect system combines each PV ballast into a single grid, reducing the load on flat roofs and increasing wind resistance.

3

## Sail

Page 17

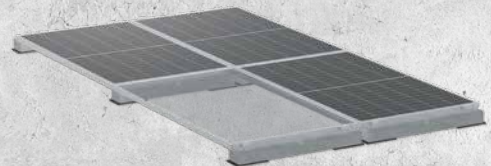
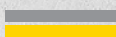


**More power in less space:** the Sail system allows up to three or six rows of ballasts to be placed, maximizing the entire flat roof area.

4

## Zero

Page 18



**Flexible mounting, adjustable height:** the Zero system allows modules to be fixed on both sides while optimising available space and the visual impact of the system.

5

## EasyWest

Page 21



# NEWS



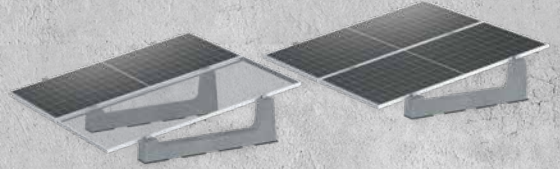
SINCE **2012**  
BY YOUR SIDE  
ON FLAT ROOFS

Large modules

**6**

## Mono-XL

Page 22



**Quick, strong, flexible:** the Mono-XL system allows for the vertical mounting of large modules, modulating the distance between rows and ensuring quick and secure placement.

**7**

## Industrial-XL

Page 25



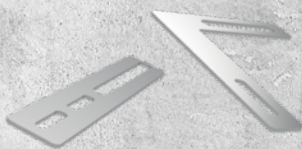
**Safe, solid and cost-effective:** the Industrial-XL system is dedicated for large panels used for commercial installations and provides safety, tightness and cost-effectiveness.

**8**

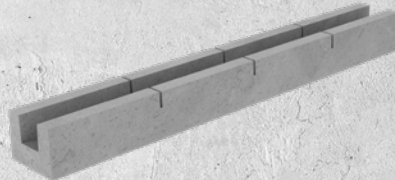
## Accessories

Page 26

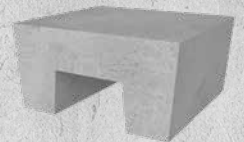
**Simplicity and safety, even for accessories:** clamps, membrane sheets and additional weights can be installed quickly and easily, and have been designed to ensure the maximum stability of PV systems.



No-Flex



Cablowind



U-Block

**LIGHTWEIGHT,  
STABLE,  
UNIVERSAL**









# SINGLE-ROW

SIMPLE,  
FAST,  
AND VERSATILE



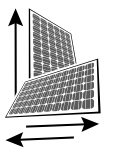
The Single-row system is a simple and extremely versatile solution: available in a wide range of tilt options from 3° to 30°, the ballasts allow panels to be fixed vertically, horizontally, or with East-West orientation, freely modulating the distance between rows and ensuring quick and easy installation, even in the presence of obstacles.

## TILT OPTIONS



0°   3°   5°   10°   15°   20°   30°

VERTICAL  
HORIZONTAL





# CONNECT

LOW LOAD,  
HIGH  
STRENGTH



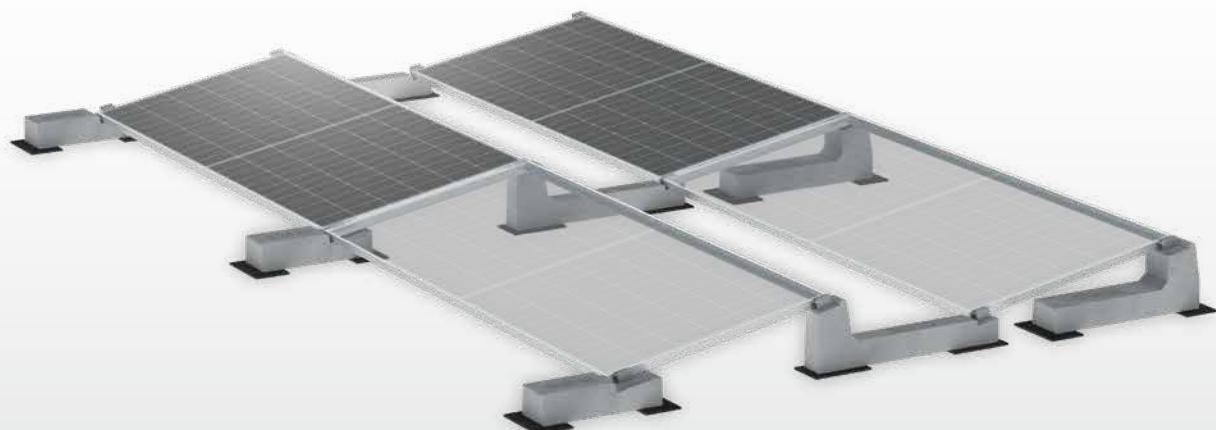
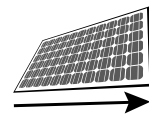
The perfect balance between resistance and lightness, the Connect system joins all ballasts into one grid, reducing roof load and transport costs, while distributing weight in a perfectly balanced fashion. The system is available with a wide range of tilt options and can be installed quickly and easily on any flat roof.

## TILT OPTIONS



5° 10° 15° 20° 30°

HORIZONTAL













# SAIL

## LOTS OF ENERGY IN LIMITED SPACE



Available in two versions of 5° and 10°, the Sail system allows you to position up to six consecutive rows of photovoltaic panels, adjusting the distance between the modules and optimising all the available space as much as possible. The ballasts can also be used in single rows, and ensure quick and easy obstacle management.

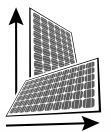
TILT OPTIONS



5°

10°

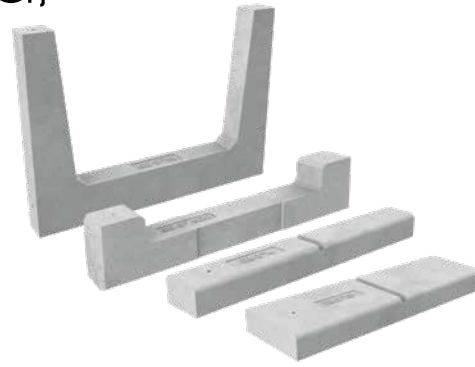
VERTICAL  
HORIZONTAL





# ZERO

## FLEXIBLE MOUNTING, ADJUSTABLE HEIGHT



With the ZERO system, the installation and design phases become much simpler: the structures allow the panels to be fixed on the long or short side, either by joining them into a single grid or by creating single rows. Providing high wind resistance, the structures also allow you to better manage landscape constraints, optimising both the space and the aesthetic impact of the system as much as possible.

BALLAST'S HEIGHT (mm)

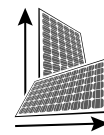


90

200

700

VERTICAL  
HORIZONTAL









# NEWS

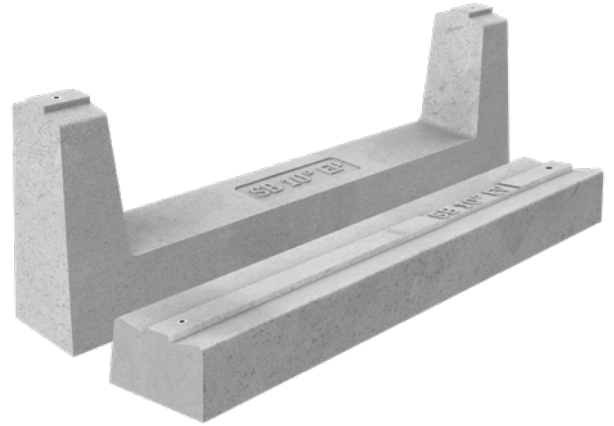
# EASYWEST<sup>®</sup>





# EASY WEST

LIGHTWEIGHT,  
STABLE,  
UNIVERSAL

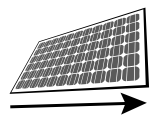


Low roof load, high wind resistance, and compatibility with any type of module: the EasyWest system was designed to offer extremely lightweight, robust, and quick-to-mount reticular solution for East-West installations on flat roofs. Compatible with both standard solar panels and large modules.

## TILT OPTIONS

**10°**

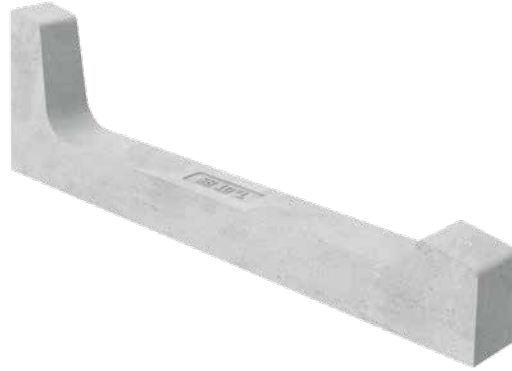
HORIZONTAL





# MONO-XL

QUICK,  
STRONG,  
FLEXIBLE

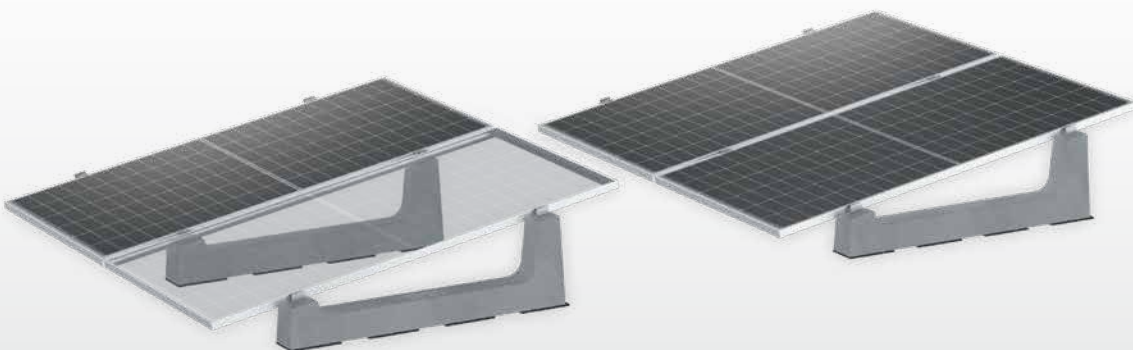
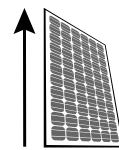


Available with 5° and 10° tilt options, Mono-XL ballasts offer large photovoltaic panels a simple and versatile solution: vertical fixation ensures strength and high stability levels for the modules. The ability to freely modulate the distance between rows ensures quick placement even in the presence of obstacles on the roof.

## TILT OPTIONS

5° 10°

VERTICAL







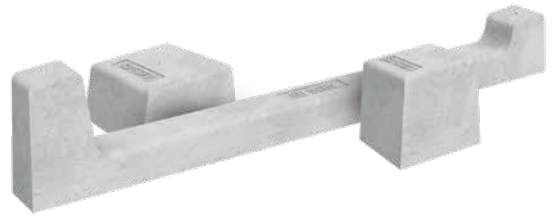






# INDUSTRIAL-XL

SAFE,  
SOLID,  
COST-EFFECTIVE



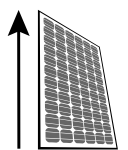
The Industrial-XL system is designed for large panels used in large PV plants and offers maximum safety and reliability. A grid configuration with 5° vertical fastening ensures maximum wind resistance and compliance with all support specifications, while reducing costs per kW and roof load.

## TILT OPTIONS



**5°**

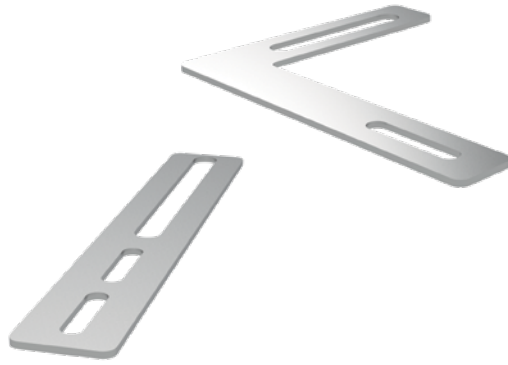
VERTICAL





# ACCESSORIES

## NO-FLEX



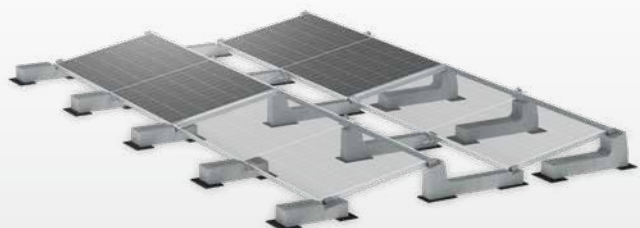
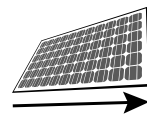
The No-Flex system ensures that large panels have the highest level of stability and load resistance. The stainless steel bracket inserted on the additional ballast allows modules to also be secured to the central section, increasing the fastening points from 4 to 6, complying with all support specifications defined by panel manufacturers and reducing the risk of bending to zero. Compatible with all horizontal systems.

### TILT OPTIONS



**3°   5°   10°   15°   20°   30°**

HORIZONTAL











LOWELOW

CAB



# ACCESSORIES

## CABLOWIND

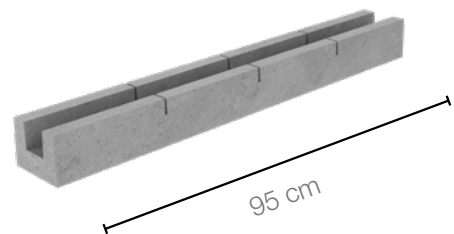


Balanced loads, tidy cables: Cablowind serves a twofold function by adding weight and channelling, increasing wind resistance and enabling tidy and professional cable installation.



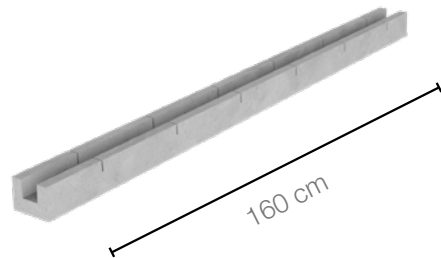
### CABLOWIND 95cm

For vertical module installation



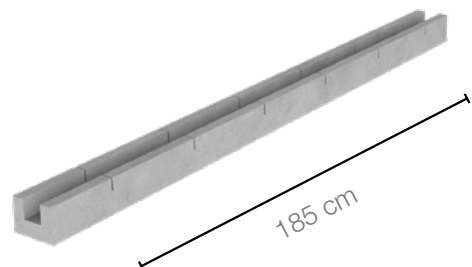
### CABLOWIND 160cm

For horizontal module installation



### CABLOWIND 185cm

For large horizontal module installation





# ACCESSORIES

## U-BLOCK



An additional U-Block weight, available in 15 and 30 kg versions, can easily and quickly be placed directly onto ballasts without the need for drilling, increasing the stability of the PV plant rapidly.

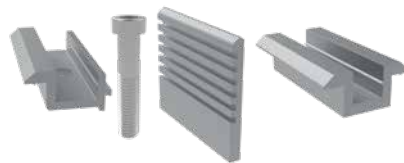


## CLAMPS AND RUBBER MATS



Stable panels, surfaces intact - aluminium clamps enable panels to be secured quickly and safely, and roof membrane sheets placed under ballasts optimise their effectiveness by further protecting all support surfaces.

### UNIVERSAL CLAMPS



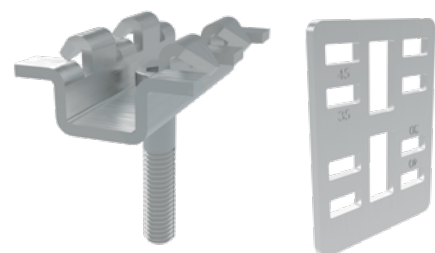
### PROTECTIVE RUBBER MATS



## POWERCLAMP®



The PowerClamp clip gives panels an even stronger and more durable fixation, providing the highest level of safety and making grounding operations much faster.



NEWS





# INSTALLATION SURFACES

All Sun Ballast® solutions enable photovoltaic plants to be implemented on any type of flat surface, from small tiled roofing on homes and blocks of flats through to large roofs with membranes on industrial buildings.

The absence of fastening slots, along with a wide range of height and tilt options, makes the ballasts extremely versatile, and enables fast, simple and safe installation on all types of roofing.



## MEMBRANES

Membranes give many buildings a high level of protection and, thanks to the absence of penetrations, the ballasts made by Sun Ballast® safely retain all of their waterproofing properties.



## FLOORING

As well as there being no need for penetrations, the ballasts are placed on protective rubber membrane sheets, ensuring a precise installation with no scratches, even on the most delicate surfaces.





## GRAVEL

The ballasts can be placed directly onto gravel and the underlying roofing, ensuring fast, simple and safe installation.



## GREEN ROOFS

Sun Ballast® has ideal solutions for any type of vegetation. The ballasts are not liable to corrosion, and thanks to the adjustable height from the ground, they can give excellent protection against direct light and bad weather.



## GROUND

Once some basic preparations have been made for ground installation, the ballasts reduce installation times and ensure a high level of stability and wind resistance.





SOLID AS M





MOUNTAINS

# FULL SUPPORT FROM DESIGN THROUGH TO INSTALLATION



THE SUN BALLAST® TECHNICAL SERVICE  
ENSURES THAT ALL CUSTOMERS  
HAVE FAST, FREE ASSISTANCE  
IN ALL PV PLANT IMPLEMENTATION PHASES.  
GUARANTEED SAFETY, EXPERTISE AND QUALITY.

Fast, free and professional -  
the Sun Ballast® service provides comprehensive support  
from the initial design phase until the last clamp is secured.

Customers benefit from ongoing support which provides calculations  
and practical tips for using the configurator and all technical documentation useful for implementing  
solid, safe and reliable photovoltaic plants.

With over 15 professionals,  
the Sun Ballast® technical department produces thousands of technical reports every day,  
fully supporting installers, designers, EPCs and distributors all over the world.





MADE TO LAST



**SUN BALLAST**  
Made to last  
Patented systems



# INTERNATIONAL DISTRIBUTION NETWORK



QUICK INSTALLATION, QUICK DELIVERY  
THE SUN BALLAST® DISTRIBUTION NETWORK  
HAS DOZENS OF INTERNATIONAL PARTNERS,  
AND BALLASTS ARE AVAILABLE IN OVER  
40 COUNTRIES THROUGHOUT THE WORLD.

Quality and simplicity, plus ongoing availability and quick delivery  
- providing customers with professional support also means ensuring a commercial service  
and logistics that are quick, efficient and punctual.

To achieve this Sun Ballast® ensures that all partners have a team of operators  
dedicated to providing ongoing support throughout the purchasing phase,  
from when an estimate is requested through to delivery of the materials.

The Sun Ballast® distribution network has dozens of international partners  
to ensure a fast, reliable delivery service in over  
40 countries throughout the world.

# CONTACT US

---

## INFORMATION AND INITIAL CONTACT

[info@sunballast.com](mailto:info@sunballast.com)

---

## BUSINESS CONSULTATION

[commerciale@sunballast.com](mailto:commerciale@sunballast.com)

---

## TECHNICAL SUPPORT

[tecnico@sunballast.com](mailto:tecnico@sunballast.com)

---

## COMMUNICATION, EVENTS, PR

[marketing@sunballast.com](mailto:marketing@sunballast.com)



UNI EN ISO 9001: 2015  
Nro 50 100 13413









**Made to last**  
**Patented systems**

**BASIC SBRL**

Via Danubio, 8 - 42124 Reggio Emilia (RE) Italy - VAT No.: 02557770357 - Tel.: +39 0522 960926

[www.sunballast.com](http://www.sunballast.com) - [info@sunballast.com](mailto:info@sunballast.com)

